

IPCC Outreach Event on AR4 Working Group

**Progress of  
Japan Paper Association's  
Committed Action Plan on  
Environment**

March 6th, 2008

Junji Ohsawa

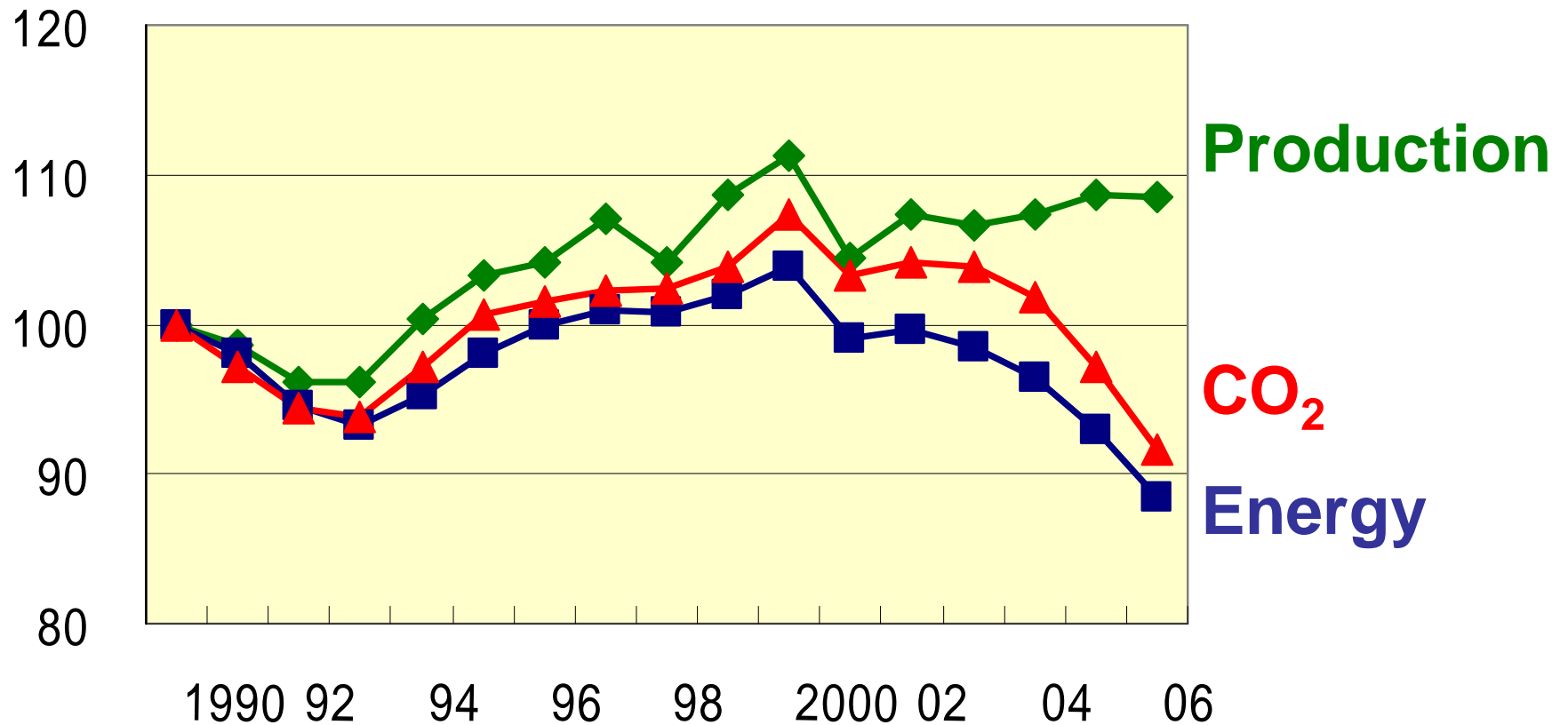
OJI PAPER Co., Ltd.

# Table 1. Targets and Progress of Japan Paper Association's Committed Action Plan

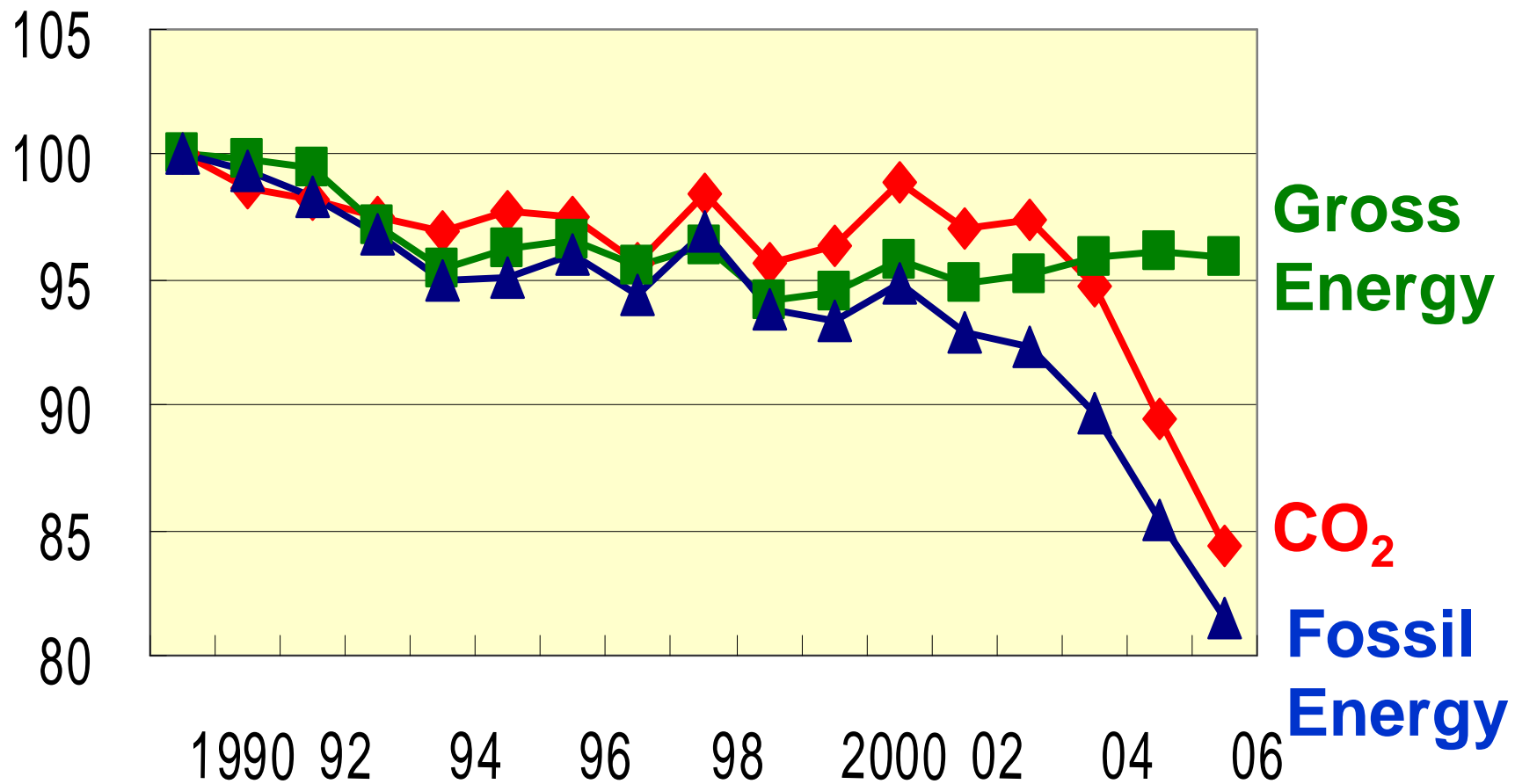
37 companies surveyed, representing 89% of the total production in Japan.

Year Established /Revised and Result	Target		
	Fossil <b>Energy</b> Consumption per Unit from the 1990 level (target Yr)	Fossil Energy-derived <b>CO<sub>2</sub></b> Emission per Unit from the 1990 level (target Yr)	<b>Forest Plantation</b> Area Owned or Managed 1000 ha (target Yr)
Jan. 1997	10%(2010)	None	550(2010)
Nov. 2004	13%(2010)	10%(2010)	600(2010)
Sept. 2007	20%(2008-	16%(2008-	700(2012)
Result in <b>2007</b>	<sup>12)</sup> <b>18.5%</b>	<sup>12)</sup> <b>15.6%</b>	<b>605</b>

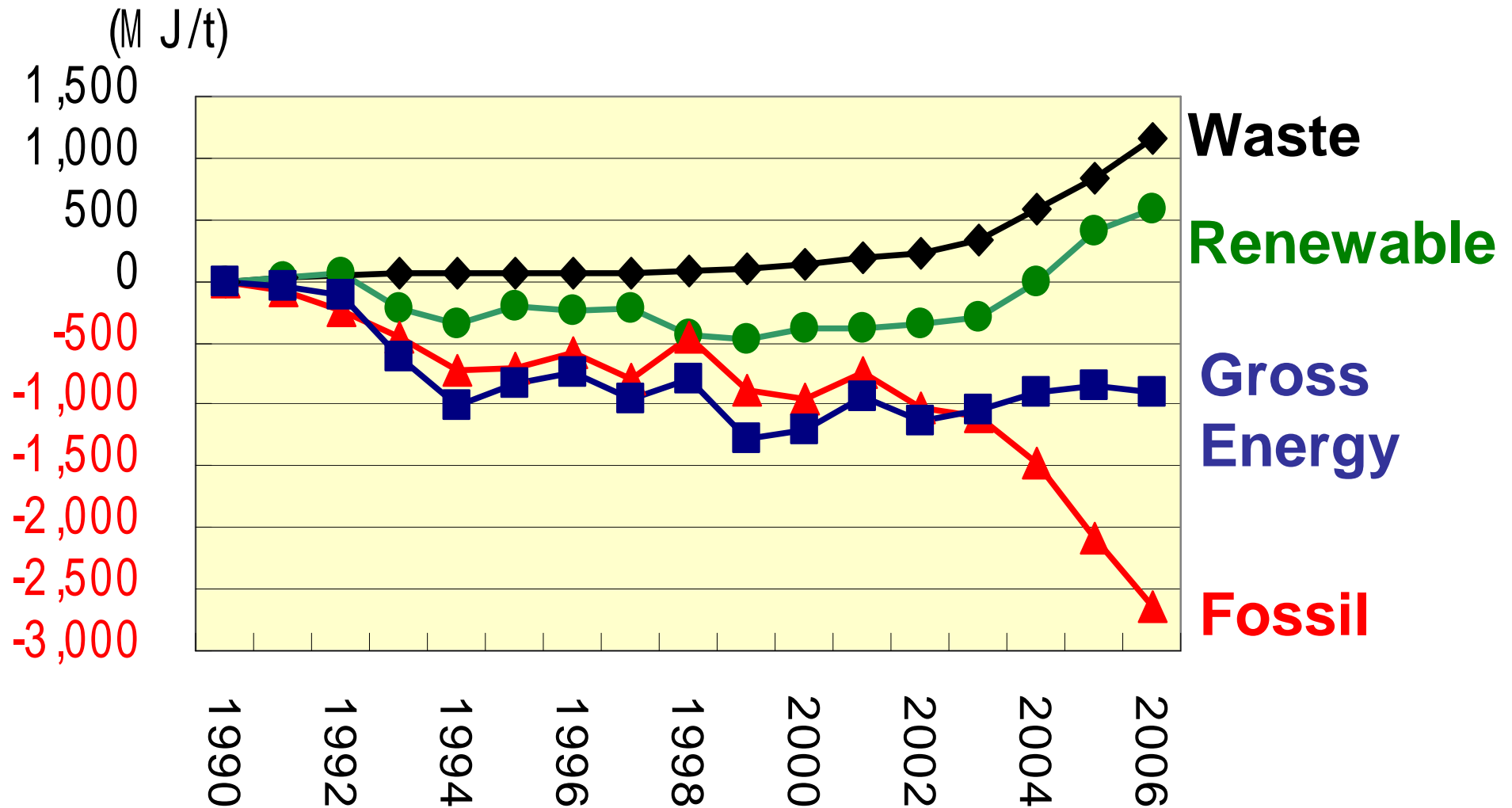
**Fig.1 Trends of Paper and Paperboard Production, Fossil Energy Consumption and Fossil Energy-derived CO<sub>2</sub> Emission (FY1990 as 100)**



**Fig.2 Trends of Gross Energy Consumption, Fossil Energy Consumption and Fossil Energy-derived CO<sub>2</sub> per Unit Production (FY1990 as 100)**



# Figure 3. Trends of Energy Consumption per Unit Production by Energy Type

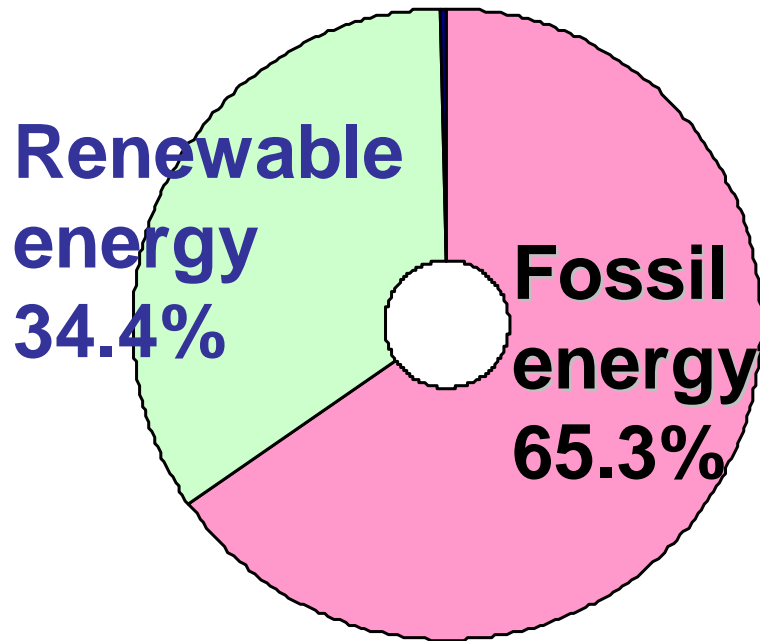


Waste: RPF(Refused Paper and Plastics fuel), tire rubber, plastics, etc.

**Fig.4 Breakdown of Gross energy Consumption per Unit Production by Energy Type**

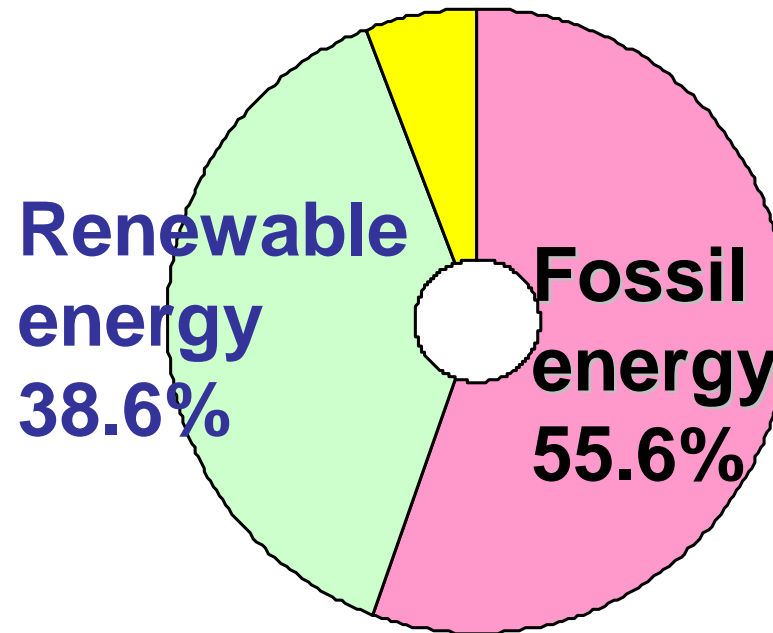
**FY 1990**

**Waste 0.3%**

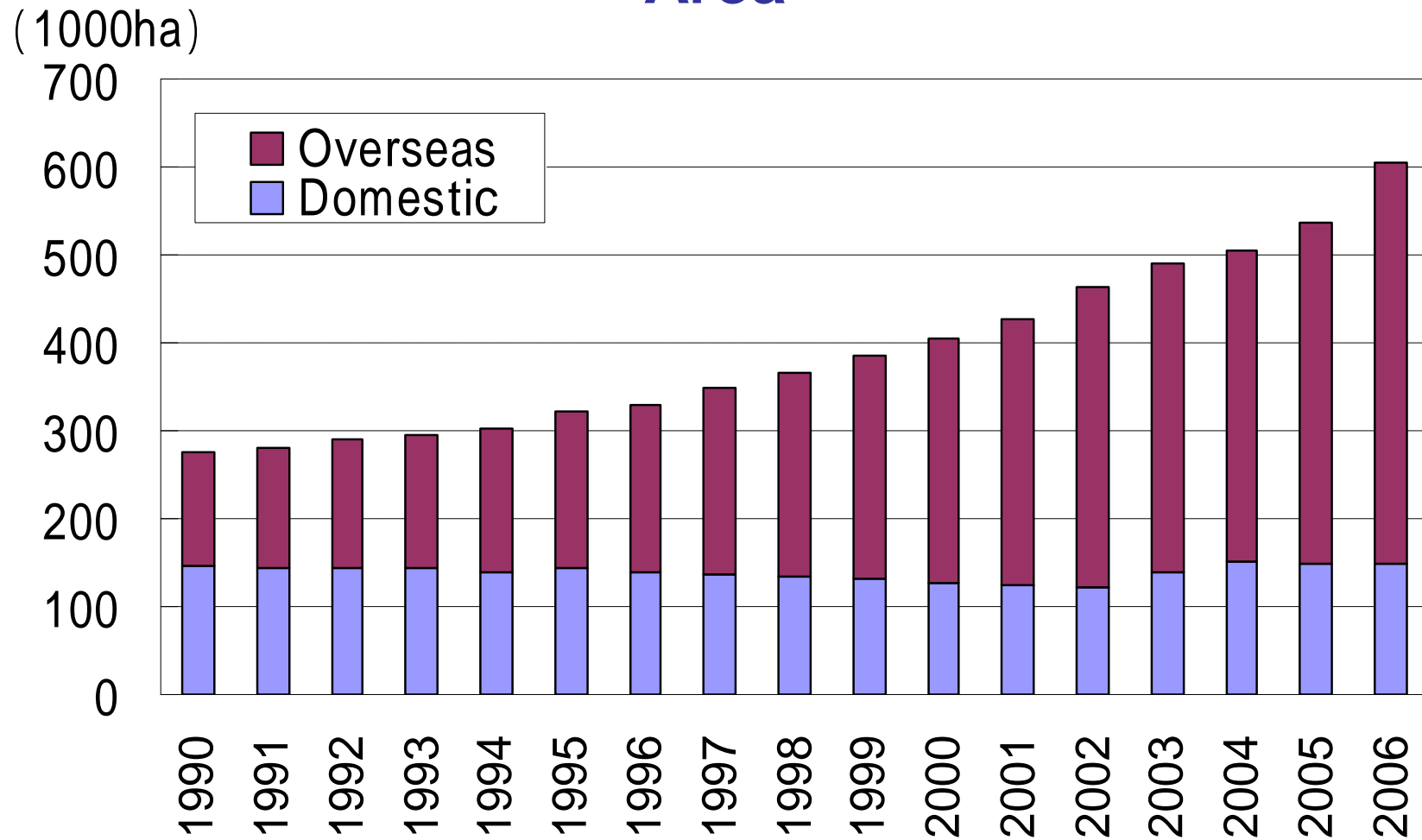


**FY2006**

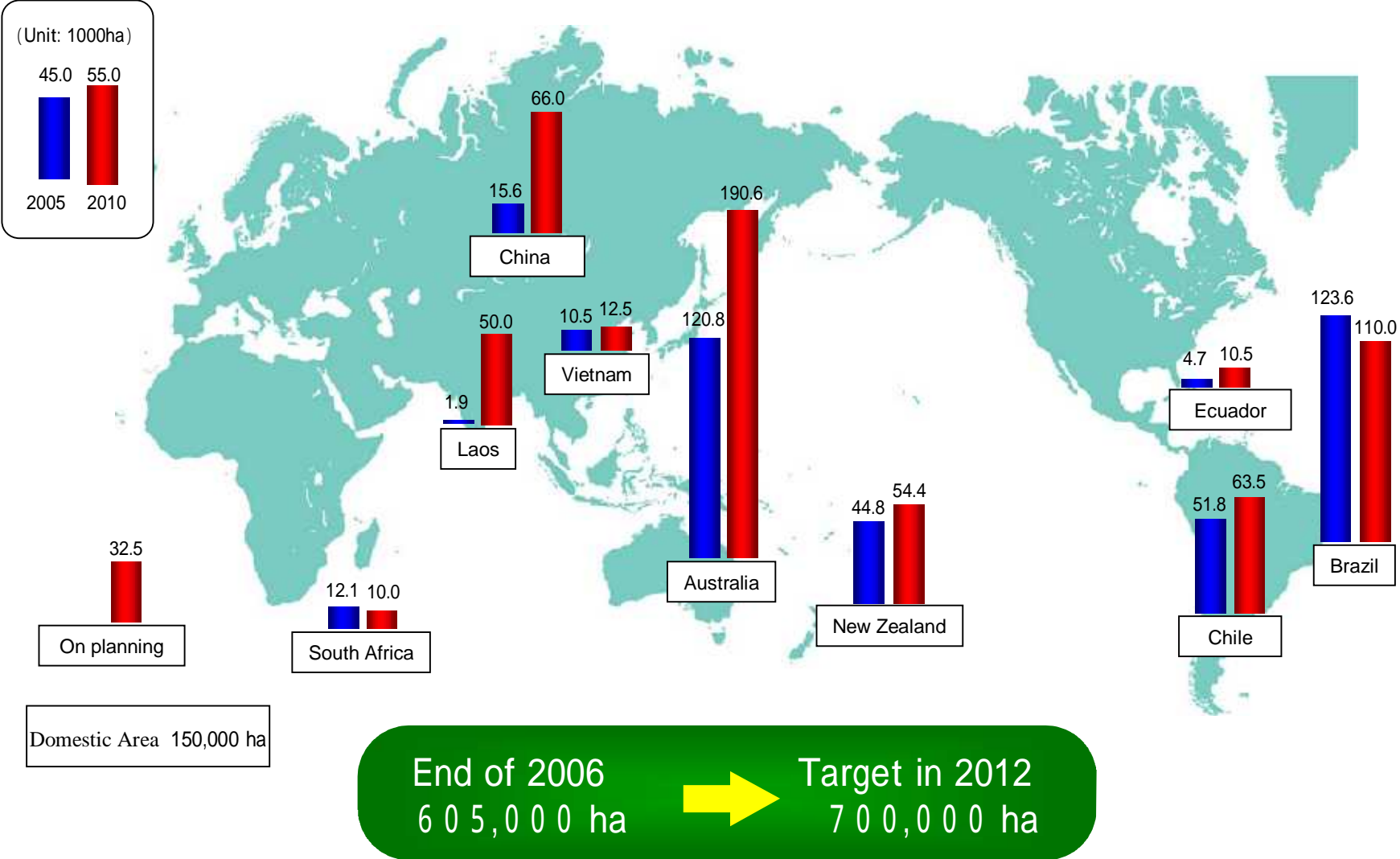
**Waste 5.8%**



## Fig.5 Changes of Forest Plantation Area



# Fig.6 Forest Plantation Projects of Japanese Paper Industry





# Conclusion

- **Japan Paper Association (JPA) established the Committed Action Plan on Environment in 1997, and revised in 2004 and 2007.**
- **The target reduction rate of fossil energy-derived CO<sub>2</sub> is 16% from the 1990 level and it is aimed to be achieved in 2008-2012.**
- **JPA has been promoting afforestation and reforestation from the view point of the raw material securing and environment.**